

Supported Independent Living (SIL) Vacancy

**Plumpton
Shared Home**



Open plan living



Front of house



Shared kitchen

1 bedroom in 4 bed shared home

Age group: 25 years old +

Gender: Any



4 bed



3 bath



2 living

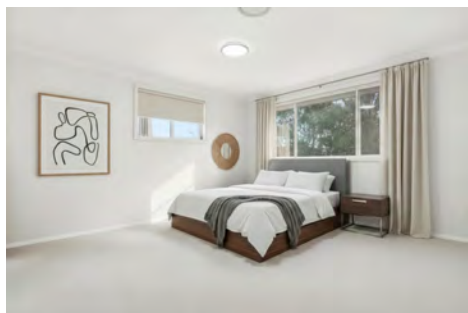


Scan me!

This warm, welcoming and freshly painted two-storey home in peaceful Plumpton is designed to help residents feel safe, comfortable, and truly at home. It offers the freedom to live as independently as possible, with caring staff available 24/7 to provide support whenever it's needed.

Enquire now 1300 588 688

Supported Independent Living



Vacant bedroom



Ensuite

Currently home to three residents aged over 40, this household offers a calm and harmonious living environment. They share simple, meaningful moments together—whether it's playing UNO, arts and crafts, visiting local cafés, or baking on weekends—creating a friendly and supportive atmosphere that feels like home.

Floor plan



Dimensions are approximate. All information contained is gathered from sources we believe to be reliable. However we cannot guarantee its accuracy and interested persons should rely on their own enquiries. www.visionphoto.com.au

Room Vacancy

Plumpton Shared Home

Home Features

- ✓ 24/7 on-site care available
- ✓ Double storey
- ✓ Internal stairs
- ✓ Wi-Fi
- ✓ Shared living space
- ✓ Open plan living
- ✓ Shared kitchen
- ✓ Private bathroom
- ✓ Shared bathroom
- ✓ Bathtub
- ✓ Shared laundry
- ✓ Private courtyard
- ✓ Garden
- ✓ Barbecue
- ✓ Access to vehicle with contribution



Contact us.

Start the conversation today.

- ☎ | 1300 588 688
- ✉ | enquiries@sunnyfield.org.au
- 🌐 | sunnyfield.org.au

© June 2025 Sunnyfield
ABN 72 000 415 127 Charity Fundraising no. 13915

Registered
NDIS
Provider



Sunnyfield